

Instructions: Work the problems below as directed. Show all work. Clearly mark your final answers. Use exact values unless the problem specifically directs you to round. Simplify as much as possible. Partial credit is possible, but solutions without work will not receive full credit.

1. Explain why $\int_{-2}^2 x^5 - 3x + \sin x \, dx$ is equal to zero without doing any integrating.

all three terms are ~~odd~~ odd functions

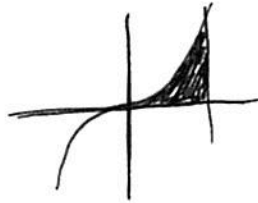
$$\text{and if } f(x) \text{ is odd then } \int_{-a}^a f(x) \, dx = 0$$

2. Evaluate $\int_1^4 \sqrt{x} - \frac{1}{x} \, dx$. $x^{1/2} - x^{-1}$

$$\frac{2}{3} x^{3/2} - \ln x \Big|_1^4 = \frac{2}{3} 4^{3/2} - \ln 4 - \frac{2}{3} 1^{3/2} + \ln 1 =$$

$$\frac{2}{3} (8) - \ln 4 - \frac{2}{3} = \frac{16}{3} - \frac{2}{3} - \ln 4 = \frac{14}{3} - \ln 4$$

3. Find the area of the region bounded by $y = x^3$, $x = 0$, $y = 0$, $x = 2$.



$$\int_0^2 x^3 \, dx = \frac{x^4}{4} \Big|_0^2 = \frac{2^4}{4} = \frac{16}{4} = 4$$