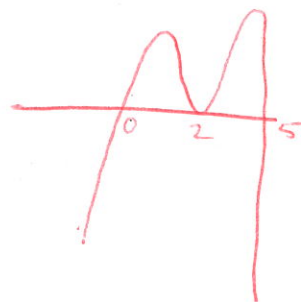
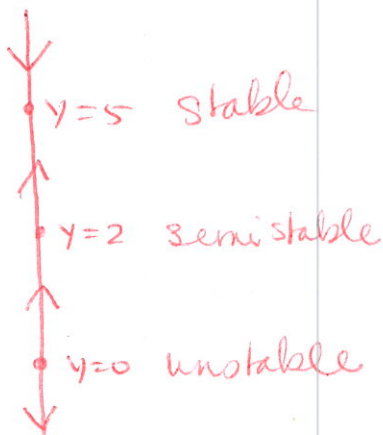


Instructions: Show all work. Use exact answers unless otherwise asked to round.

1. Graph a phase line for $y' = -y(y - 5)(y - 2)^2$ by hand and comment on the stability of each equilibrium.

$y=0, y=5, y=2$



2. Direction fields for population models are shown below. Convert each autonomous direction field to a phase line. Comment on the stability of each equilibria.

