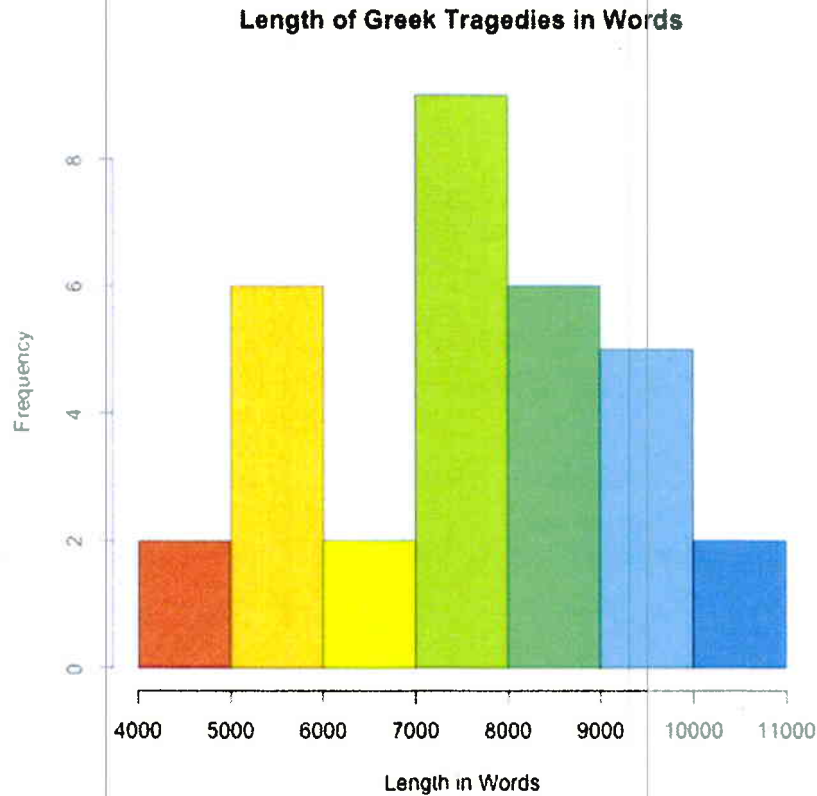


**Instructions:** Answer each question completely. Show all work for any computational questions.

1. Use the graph below to answer the following questions.



a. What is the total number of plays described in the graph?

$$2 + 2 + 6 + 9 + 6 + 5 + 2 = 32$$

b. How many plays are shorter than 7000 words?

$$2 + 6 + 2 = 10$$

c. In what category does the median length play appear?

16-17 → in 7000-8000 words range

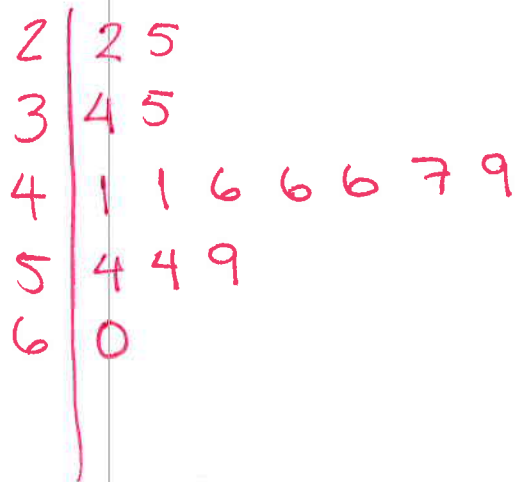
d. What percent of Greek tragedies are longer than 10,000 words?

$$2/32 = 6.25\%$$

2. Data below is for the number of home runs hit by Babe Ruth in each year of his career. Make a stemplot of the data.

54	59	35	41	46	25	47	60
54	46	49	46	41	34	22	

Space for the stemplot here.



Key 4|1 = 41

3. Does the data in #2 appear to contain any outliers? How would you describe the distribution? Roughly symmetric? Skewed left or skewed right? If you don't think any of them describes the data well, explain why not.

no outliers  
roughly symmetric